

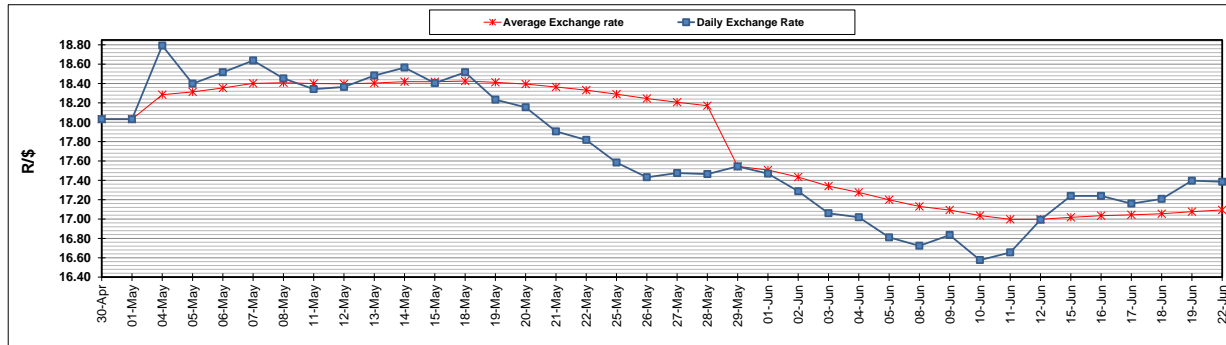
	PETROL 95 ULP	PETROL 93 ULP & LRP	DIESEL 0.05%	DIESEL 0.005%	ILL. PAR.
GAUTENG PUMP PRICE (SA c/l) AS FROM 03/06/2020	1,340.000	1,320.000	-	-	-
WHOLESALE PRICE (SA c/l) AS FROM 03/06/2020	-	-	1,138.560	1,138.960	489.828
SINGLE NATIONAL MAXIMUM RETAIL PRICE	-	-	-	-	597.000
BASIC FUEL PRICE - 22/06/2020 (SA c/l)	605.250	585.428	603.548	606.458	551.595
PRESS RELEASE CONTRIBUTION TO BFP 03/06/2020 - 22/06/2020 (SA c/l)	392.770	382.770	379.630	388.030	285.128
UNIT OVER/(UNDER) RECOVERY - 22/06/2020 (SA c/l)	(212.480)	(202.658)	(223.918)	(218.428)	(266.467)
AVERAGE BASIC FUEL PRICE 29/05/2020 - 22/06/2020	540.486	520.446	543.249	547.183	487.730
AVERAGE UNIT OVER/(UNDER) RECOVERY 29/05/2020 - 22/06/2020	(168.540)	(158.500)	(167.501)	(162.859)	(209.661)

ANALYSIS MOVEMENT OF AVERAGE OVER/(UNDER) RECOVERY

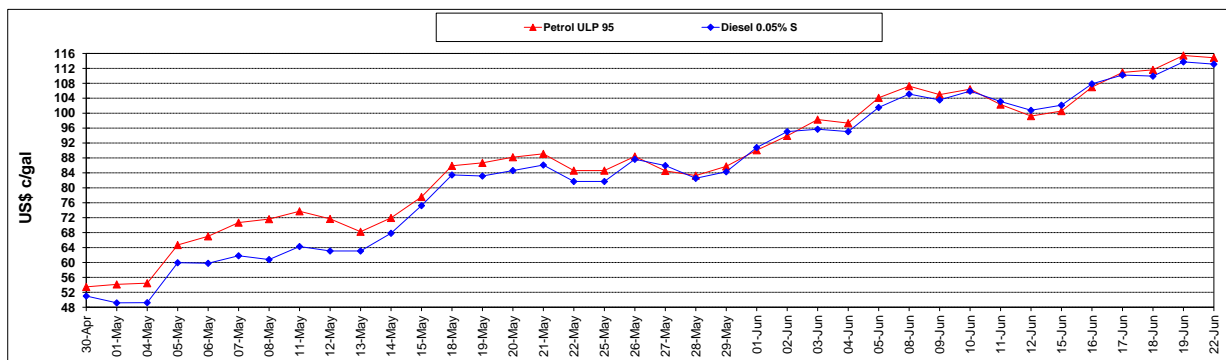
	PETROL 95	PETROL 93	DIESEL 0.05%	DIESEL 0.005%	ILL. PAR.
- MOVEMENT IN INTERNATIONAL PRODUCT PRICES	(202.612)	(191.309)	(201.747)	(197.353)	(240.408)
- MOVEMENT IN EXCHANGE RATE	34.072	32.809	34.246	34.494	30.747
AVERAGE UNIT OVER/(UNDER) RECOVERY 29/05/2020 - 22/06/2020	(168.540)	(158.500)	(167.501)	(162.859)	(209.661)

R/\$ EXCHANGE RATE - (R/\$17.3848 - 22/06/2020)

EXCHANGE RATE USED IN BASIC FUEL PRICE



INTERNATIONAL PRODUCT PRICES OF BASKET USED IN BASIC FUEL PRICE



BASIC FUEL PRICE IN SA CENTS PER LITRE

